

2013 RECITAL COSTUME INFO

Parents can view this info online in the "Recitals" section of the website starting in November

CLASS NAME: 2+3 CD DAY: Friday TIME: 4:30-5:30 pm
INSTRUCTOR: Natalie LOCATION: DXP 1 or DXP 2
SONG: "Baby Mine" by Allison Krauss DANCE STYLE: Ballet

TIGHTS:

ARE TIGHTS INCLUDING WITH THIS COSTUME?

Yes No

COLOR OF TIGHTS: Tan/Caramel

Ballet Pink Other: _____

Not Wearing Tights

SHOES:

*Shoes are NOT included with any costume. You are responsible for purchasing these on your own.

*All Intro to B/T/J classes performing a jazz dance wear black jazz shoes.

Pink Ballet Shoes

Black Patent Leather Tap Shoes

Black Lace-up Oxford Tap Shoes

*CD & Intro classes

*Jazz/Tap 1 & up

Tan Slip-on Jazz Shoes

Black Slip-on Jazz Shoes

Black Dance Sneakers

Other: _____

For CD & Intro Classes Only, LACE COLOR: _____

*laces will be distributed at recitals by backstage parents

HAIR: Half-up-half-down.

PROPS and/or ACCESSORIES THAT WILL BE ORDERED w/COSTUME & STUDENT WILL OWN _____

ADDITIONAL COSTUME ITEMS THAT DANCER MUST PROVIDE HER/HIMSELF: _____

REMINDERS:

*Dancers 4+yr s should wear "stage make-up"

(Refer to "Recital Make-up" on website)

*NO PANTIES under tights for rehearsal or recital

*For rehearsals wear old tights. Save new ones for recitals

*NO jewelry, nail polish or holes in tights

NOVEMBER 1st - 50%

("Costume Deposit")

\$ 22.50

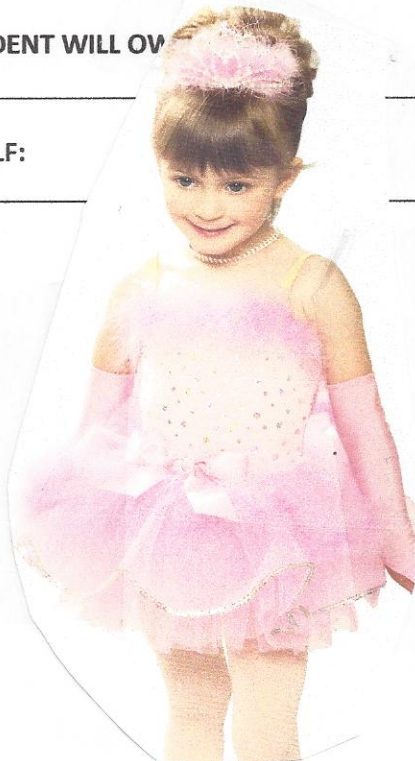
DECEMBER 1st - 50%

("Costume Balance")

\$ 22.50

COSTUME TOTAL

\$ 45



2013 RECITAL COSTUME INFO

Parents can view this info online in the "Recitals" section of the website starting in November

CLASS NAME: CD 3-4 DAY: Friday TIME: 4³⁰-5³⁰
INSTRUCTOR: Melissa LOCATION: DXP 1 or DXP 2
SONG: "Animal Crackers in my Soup" DANCE STYLE: Tap

TIGHTS:

ARE TIGHTS INCLUDING WITH THIS COSTUME?

Yes

No

COLOR OF TIGHTS:

Tan/Caramel

Ballet Pink

Other: _____

Not Wearing Tights

SHOES:

*Shoes are NOT included with any costume. You are responsible for purchasing these on your own.

*All Intro to B/T/J classes performing a jazz dance wear black jazz shoes.

Pink Ballet Shoes

Black Patent Leather Tap Shoes

*CD & Intro classes

Black Lace-up Oxford Tap Shoes

*Jazz/Tap 1 & up

Tan Slip-on Jazz Shoes

Black Slip-on Jazz Shoes

Black Dance Sneakers

Other: _____

For CD & Intro Classes Only, LACE COLOR: Red

*laces will be distributed at recitals by backstage parents

HAIR: Half up - Half down curly - headpiece on top of head.

PROPS and/or ACCESSORIES THAT WILL BE ORDERED w/COSTUME & STUDENT WILL OWN:

Short white gloves, white tutu socks

ADDITIONAL COSTUME ITEMS THAT DANCER MUST PROVIDE HER/HIMSELF:

REMINDERS:

*Dancers 4+yr s should wear "stage make-up"

(Refer to "Recital Make-up" on website)

*NO PANTIES under tights for rehearsal or recital

*For rehearsals wear old tights. Save new ones for recitals

*NO jewelry, nail polish or holes in tights

NOVEMBER 1st - 50%

("Costume Deposit")

\$ 27.50

DECEMBER 1st - 50%

("Costume Balance")

\$ 27.50

COSTUME TOTAL

\$ 55



2013 RECITAL COSTUME INFO

Parents can view this info online in the "Recitals" section of the website starting in November

CLASS NAME: Ballet/Jazz DAY: Friday TIME: 4:30 pm

INSTRUCTOR: Sloan Charest LOCATION: DXP1 or DXP2

SONG: I Wanna Dance with Somebody DANCE STYLE: Jazz

TIGHTS:

ARE TIGHTS INCLUDING WITH THIS COSTUME? Yes No

COLOR OF TIGHTS: Tan/Caramel Ballet Pink Other: _____ Not Wearing Tights

SHOES:

*Shoes are NOT included with any costume. You are responsible for purchasing these on your own.

*All Intro to B/T/J classes performing a jazz dance wear black jazz shoes.

Pink Ballet Shoes

Black Patent Leather Tap Shoes
* CD & Intro classes

Black Lace-up Oxford Tap Shoes
* Jazz/ Tap 1 & up

Tan Slip-on Jazz Shoes

Black Slip-on Jazz Shoes

Black Dance Sneakers

Other: _____

For CD & Intro Classes Only, LACE COLOR: _____

*laces will be distributed at recitals by backstage parents

HAIR: Dancer's left part at brow, low ponytail.

PROPS and/ or ACCESSORIES THAT WILL BE ORDERED w/ COSTUME & STUDENT WILL OWN:

ADDITIONAL COSTUME ITEMS THAT DANCER MUST PROVIDE HER/ HIM SELF:

REMINDERS:

- *Dancers 4+yr s should wear "stage make-up"
(Refer to "Recital Make-up" on website)
- *NO PANTIES under tights for rehearsal or recital
- *For rehearsals wear old tights. Save new ones for recitals
- *NO jewelry, nail polish or holes in tights

NOVEMBER 1 st - 50% ("Costume Deposit")	\$ <u>30</u>
DECEMBER 1 st - 50% ("Costume Balance")	\$ <u>30</u>
COSTUME TOTAL	\$ <u>60</u>



2013 RECITAL COSTUME INFO

Parents can view this info online in the "Recitals" section of the website starting in November

CLASS NAME: CD-4-5 DAY: Friday TIME: 5:30-6:30
INSTRUCTOR: Melissa LOCATION: DXP 1 or DXP 2
SONG: "Celebrate Goodtimes" DANCE STYLE: Tap

TIGHTS:

ARE TIGHTS INCLUDING WITH THIS COSTUME? Yes No
COLOR OF TIGHTS: Tan/Caramel Ballet Pink Other: _____ Not Wearing Tights

SHOES:

*Shoes are NOT included with any costume. You are responsible for purchasing these on your own.
*All Intro to B/T/J classes performing a jazz dance wear black jazz shoes.

Pink Ballet Shoes Black Patent Leather Tap Shoes Black Lace-up Oxford Tap Shoes
*CD & Intro classes *Jazz/Tap 1 & up
Tan Slip-on Jazz Shoes Black Slip-on Jazz Shoes Black Dance Sneakers Other: _____

For CD & Intro Classes Only, LACE COLOR: Teal Blue
*laces will be distributed at recitals by backstage parents

HAIR: Half up Half down curly - hairpiece on head.

PROPS and/or ACCESSORIES THAT WILL BE ORDERED w/COSTUME & STUDENT WILL OWN:
Headpiece

ADDITIONAL COSTUME ITEMS THAT DANCER MUST PROVIDE HER/HIMSELF:

- REMINDERS:
- *Dancers 4+yr s should wear "stage make-up" (Refer to "Recital Make-up" on website)
 - *NO PANTIES under tights for rehearsal or recital
 - *For rehearsals wear old tights. Save new ones for recitals
 - *NO jewelry, nail polish or holes in tights

NOVEMBER 1 st - 50% ("Costume Deposit")	\$ <u>13.50</u>
DECEMBER 1 st - 50% ("Costume Balance")	\$ <u>13.50</u>
COSTUME TOTAL	\$ <u>27</u>



2013 RECITAL COSTUME INFO

Parents can view this info online in the "Recitals" section of the website starting in November

CLASS NAME: CD 4-5 DAY: Friday TIME: 5:30-6:30
INSTRUCTOR: Melissa LOCATION: DXP 1 or DXP 2
SONG: "True Love's Kiss" DANCE STYLE: Ballet

TIGHTS:

ARE TIGHTS INCLUDING WITH THIS COSTUME?

Yes

No

COLOR OF TIGHTS:

Tan/Caramel

Ballet Pink

Other: _____

Not Wearing Tights

SHOES:

*Shoes are NOT included with any costume. You are responsible for purchasing these on your own.

*All Intro to B/T/J classes performing a jazz dance wear black jazz shoes.

Pink Ballet Shoes

Black Patent Leather Tap Shoes

Black Lace-up Oxford Tap Shoes

*CD & Intro classes

*Jazz/Tap 1 & up

Tan Slip-on Jazz Shoes

Black Slip-on Jazz Shoes

Black Dance Sneakers

Other: _____

For CD & Intro Classes Only, LACE COLOR: _____

*laces will be distributed at recitals by backstage parents

HAIR: Half up - Half down curly - headband around head.

PROPS and/or ACCESSORIES THAT WILL BE ORDERED w/COSTUME & STUDENT WILL OWN:

ADDITIONAL COSTUME ITEMS THAT DANCER MUST PROVIDE HER/HIMSELF:

REMINDERS:

- *Dancers 4+yr s should wear "stage make-up"
(Refer to "Recital Make-up" on website)
- *NO PANTIES under tights for rehearsal or recital
- *For rehearsals wear old tights. Save new ones for recitals
- *NO jewelry, nail polish or holes in tights

NOVEMBER 1 st - 50% ("Costume Deposit")	\$ <u>13.50</u>
DECEMBER 1 st - 50% ("Costume Balance")	\$ <u>13.50</u>
COSTUME TOTAL	\$ <u>27</u>



2013 RECITAL COSTUME INFO

Parents can view this info online in the "Recitals" section of the website starting in November

CLASS NAME: BTJ DAY: Friday TIME: 5:30-6:30pm
INSTRUCTOR: Natalie LOCATION: DXP 1 or DXP 2
SONG: "I'm Still Standing", by Elton John DANCE STYLE: Tap

TIGHTS:

ARE TIGHTS INCLUDING WITH THIS COSTUME?

Yes

No

COLOR OF TIGHTS:

Tan/Caramel

Ballet Pink

Other: _____

Not Wearing Tights

SHOES:

*Shoes are NOT included with any costume. You are responsible for purchasing these on your own.

*All Intro to B/T/J classes performing a jazz dance wear black jazz shoes.

Pink Ballet Shoes

Black Patent Leather Tap Shoes

*CD & Intro classes

Black Lace-up Oxford Tap Shoes

*Jazz/Tap 1 & up

Tan Slip-on Jazz Shoes

Black Slip-on Jazz Shoes

Black Dance Sneakers

Other: _____

For CD & Intro Classes Only, LACE COLOR:

Teal

*laces will be distributed at recitals by backstage parents

HAIR: Bun, Part on the left

PROPS and/or ACCESSORIES THAT WILL BE ORDERED w/COSTUME & STUDENT WILL OWN:

ADDITIONAL COSTUME ITEMS THAT DANCER MUST PROVIDE HER/HIMSELF:

REMINDERS:

*Dancers 4+yr s should wear "stage make-up"

(Refer to "Recital Make-up" on website)

*NO PANTIES under tights for rehearsal or recital

*For rehearsals wear old tights. Save new ones for recitals

*NO jewelry, nail polish or holes in tights

NOVEMBER 1 st - 50% ("Costume Deposit")	\$ <u>14.50</u>
DECEMBER 1 st - 50% ("Costume Balance")	\$ <u>14.50</u>
COSTUME TOTAL	\$ <u>29</u>



2013 RECITAL COSTUME INFO

Parents can view this info online in the "Recitals" section of the website starting in November

CLASS NAME: BTJ DAY: Friday TIME: 5:30-6:30pm
INSTRUCTOR: Natalie LOCATION: DXP 1 or DXP 2
SONG: Cat Stevens - "Wild World" DANCE STYLE: Ballet

TIGHTS:

ARE TIGHTS INCLUDING WITH THIS COSTUME?

Yes

No

COLOR OF TIGHTS:

Tan/Caramel

~~Ballet Pink~~

Other: _____

Not Wearing Tights

SHOES:

*Shoes are NOT included with any costume. You are responsible for purchasing these on your own.

*All Intro to B/T/J classes performing a jazz dance wear black jazz shoes.

Pink Ballet Shoes

Black Patent Leather Tap Shoes

*CD & Intro classes

Black Lace-up Oxford Tap Shoes

*Jazz/Tap 1 & up

Tan Slip-on Jazz Shoes

Black Slip-on Jazz Shoes

Black Dance Sneakers

Other: _____

For CD & Intro Classes Only, LACE COLOR: _____

*laces will be distributed at recitals by backstage parents

HAIR: Bun, part on left, flower on right side

PROPS and/or ACCESSORIES THAT WILL BE ORDERED w/COSTUME & STUDENT WILL OWN:

ADDITIONAL COSTUME ITEMS THAT DANCER MUST PROVIDE HER/HIMSELF:

REMINDERS:

- *Dancers 4+yr s should wear "stage make-up" (Refer to "Recital Make-up" on website)
- *NO PANTIES under tights for rehearsal or recital
- *For rehearsals wear old tights. Save new ones for recitals
- *NO jewelry, nail polish or holes in tights

NOVEMBER 1 st - 50% ("Costume Deposit")	\$ <u>14.50</u>
DECEMBER 1 st - 50% ("Costume Balance")	\$ <u>14.50</u>
COSTUME TOTAL	\$ <u>29</u>



2013 RECITAL COSTUME INFO

Parents can view this info online in the "Recitals" section of the website starting in November

CLASS NAME: BTJ DAY: Friday TIME: 5:30-6:30pm
INSTRUCTOR: Natalie LOCATION: DXP 1 or DXP 2
SONG: Cat Stevens, Wild World DANCE STYLE: Ballet, Tap

TIGHTS:

ARE TIGHTS INCLUDING WITH THIS COSTUME? Yes No

COLOR OF TIGHTS: Tan/Caramel Ballet Pink Other: _____ **Not Wearing Tights**

Black Socks

SHOES:

*Shoes are NOT included with any costume. You are responsible for purchasing these on your own.

*All Intro to B/T/J classes performing a jazz dance wear black jazz shoes.

Pink Ballet Shoes Black Patent Leather Tap Shoes **Black Lace-up Oxford Tap Shoes**
*CD & Intro classes *Jazz/Tap 1 & up

Tan Slip-on Jazz Shoes Black Slip-on Jazz Shoes Black Dance Sneakers Other: Black Ballet shoes

For CD & Intro Classes Only, LACE COLOR: _____

*laces will be distributed at recitals by backstage parents

HAIR: Out of face

PROPS and/or ACCESSORIES THAT WILL BE ORDERED w/COSTUME & STUDENT WILL OWN:

ADDITIONAL COSTUME ITEMS THAT DANCER MUST PROVIDE HER/HIMSELF:

Black Jazz pants, black socks

REMINDERS:

- *Dancers 4+yr s should wear "stage make-up" (Refer to "Recital Make-up" on website)
- *NO PANTIES under tights for rehearsal or recital
- *For rehearsals wear old tights. Save new ones for recitals
- *NO jewelry, nail polish or holes in tights

NOVEMBER 1 st - 50% ("Costume Deposit")	\$ <u>11.50</u>
DECEMBER 1 st - 50% ("Costume Balance")	\$ <u>11.50</u>
COSTUME TOTAL	\$ <u>23</u>



