

2013 RECITAL COSTUME INFO

Parents can view this info online in the "Recitals" section of the website starting in November

CLASS NAME: Creative Dance 2-3 DAY: Monday TIME: 9am
INSTRUCTOR: KayKay Williamson LOCATION: DXP 1 or DXP 2
SONG: Zip-a-dee-do-da! DANCE STYLE: Ballet

TIGHTS:

ARE TIGHTS INCLUDING WITH THIS COSTUME? Yes No
COLOR OF TIGHTS: Tan/Caramel Ballet Pink Other: _____ Not Wearing Tights

SHOES:

*Shoes are NOT included with any costume. You are responsible for purchasing these on your own.

*All Intro to B/T/J classes performing a jazz dance wear black jazz shoes.

Pink Ballet Shoes

Black Patent Leather Tap Shoes
*CD & Intro classes

Black Lace-up Oxford Tap Shoes
*Jazz/Tap 1 & up

Tan Slip-on Jazz Shoes

Black Slip-on Jazz Shoes

Black Dance Sneakers

Other: _____

For CD & Intro Classes Only, LACE COLOR: _____

*laces will be distributed at recitals by backstage parents

HAIR: low bun parted dancers left

PROPS and/or ACCESSORIES THAT WILL BE ORDERED w/COSTUME & STUDENT WILL OWN:

Flower hair piece

ADDITIONAL COSTUME ITEMS THAT DANCER MUST PROVIDE HER/HIMSELF:

REMINDERS:

- *Dancers 4+yr s should wear "stage make-up" (Refer to "Recital Make-up" on website)
- *NO PANTIES under tights for rehearsal or recital
- *For rehearsals wear old tights. Save new ones for recitals
- *NO jewelry, nail polish or holes in tights

NOVEMBER 1 st - 50% ("Costume Deposit")	\$ <u>22.50</u>
DECEMBER 1 st - 50% ("Costume Balance")	\$ <u>22.50</u>
COSTUME TOTAL	\$ <u>45</u>



2013 RECITAL COSTUME INFO

Parents can view this info online in the "Recitals" section of the website starting in November

CLASS NAME: 3+4 CD DAY: Monday TIME: 9-10am
INSTRUCTOR: Natalie LOCATION: DXP 1 or DXP 2
SONG: Circle Game, by Joni Mitchell DANCE STYLE: Ballet

TIGHTS:

ARE TIGHTS INCLUDING WITH THIS COSTUME?

Yes

No

COLOR OF TIGHTS: Tan/Caramel

Ballet Pink

Other: _____

Not Wearing Tights

SHOES:

*Shoes are NOT included with any costume. You are responsible for purchasing these on your own.

*All Intro to B/T/J classes performing a jazz dance wear black jazz shoes.

Pink Ballet Shoes

Black Patent Leather Tap Shoes

*CD & Intro classes

Black Lace-up Oxford Tap Shoes

*Jazz/Tap 1 & up

Tan Slip-on Jazz Shoes

Black Slip-on Jazz Shoes

Black Dance Sneakers

Other: _____

For CD & Intro Classes Only, LACE COLOR: _____

*laces will be distributed at recitals by backstage parents

HAIR: Some up some down, hair away from face, bow on Right

PROPS and/or ACCESSORIES THAT WILL BE ORDERED w/COSTUME & STUDENT WILL OWN:

ADDITIONAL COSTUME ITEMS THAT DANCER MUST PROVIDE HER/HIMSELF:

REMINDERS:

- *Dancers 4+yr s should wear "stage make-up"
(Refer to "Recital Make-up" on website)
- *NO PANTIES under tights for rehearsal or recital
- *For rehearsals wear old tights. Save new ones for recitals
- *NO jewelry, nail polish or holes in tights

NOVEMBER 1 st - 50% ("Costume Deposit")	\$ <u>25.50</u>
DECEMBER 1 st - 50% ("Costume Balance")	\$ <u>25.50</u>
COSTUME TOTAL	\$ <u>51</u>



2013 RECITAL COSTUME INFO

Parents can view this info online in the "Recitals" section of the website starting in November

CLASS NAME: Creative Dance 3-4 DAY: Monday TIME: 10am
INSTRUCTOR: Kay Kay Williamson LOCATION: DXP 1 or DXP 2
SONG: Smile DANCE STYLE: Ballet

TIGHTS:

ARE TIGHTS INCLUDING WITH THIS COSTUME?

Yes No

COLOR OF TIGHTS: Tan/Caramel Ballet Pink Other: _____ Not Wearing Tights

SHOES:

*Shoes are NOT included with any costume. You are responsible for purchasing these on your own.

*All Intro to B/T/J classes performing a jazz dance wear black jazz shoes.

Pink Ballet Shoes

Black Patent Leather Tap Shoes
*CD & Intro classes

Black Lace-up Oxford Tap Shoes
*Jazz/Tap 1 & up

Tan Slip-on Jazz Shoes

Black Slip-on Jazz Shoes

Black Dance Sneakers

Other: _____

For CD & Intro Classes Only, LACE COLOR: _____

*laces will be distributed at recitals by backstage parents

HAIR: low bun parted dancers left

PROPS and/or ACCESSORIES THAT WILL BE ORDERED w/COSTUME & STUDENT WILL OWN:

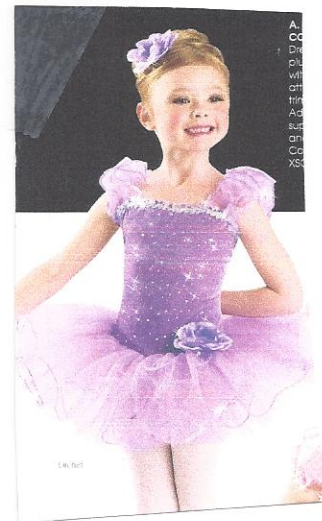
Flower hair piece

ADDITIONAL COSTUME ITEMS THAT DANCER MUST PROVIDE HER/HIMSELF:

REMINDERS:

- *Dancers 4+yr s should wear "stage make-up"
(Refer to "Recital Make-up" on website)
- *NO PANTIES under tights for rehearsal or recital
- *For rehearsals wear old tights. Save new ones for recitals
- *NO jewelry, nail polish or holes in tights

NOVEMBER 1 st - 50% ("Costume Deposit")	\$ <u>21.50</u>
DECEMBER 1 st - 50% ("Costume Balance")	\$ <u>21.50</u>
COSTUME TOTAL	\$ <u>43</u>



2013 RECITAL COSTUME INFO

Parents can view this info online in the "Recitals" section of the website starting in November

CLASS NAME: 4+5 CD DAY: Monday TIME: 10-11am

INSTRUCTOR: Natalie LOCATION: DXP 1 or DXP 2

SONG: Jungle book I want to be like you DANCE STYLE: Tap
by Louis Prima

TIGHTS:

ARE TIGHTS INCLUDED WITH THIS COSTUME?

Yes

No

COLOR OF TIGHTS: Tan/Caramel

~~Ballet Pink~~

Other: _____

Not Wearing Tights

SHOES:

*Shoes are NOT included with any costume. You are responsible for purchasing these on your own.

*All Intro to B/T/J classes performing a jazz dance wear black jazz shoes.

Pink Ballet Shoes

Black Patent Leather Tap Shoes
*CD & Intro classes

Black Lace-up Oxford Tap Shoes
*Jazz/Tap 1 & up

Tan Slip-on Jazz Shoes

Black Slip-on Jazz Shoes

Black Dance Sneakers

Other: _____

For CD & Intro Classes Only, LACE COLOR: Gold

*laces will be distributed at recitals by backstage parents

HAIR: Ponytail, Part on the left (high pony)

PROPS and/or ACCESSORIES THAT WILL BE ORDERED w/COSTUME & STUDENT WILL OWN:

ADDITIONAL COSTUME ITEMS THAT DANCER MUST PROVIDE HER/HIMSELF:

REMINDERS:

- *Dancers 4+yr s should wear "stage make-up"
(Refer to "Recital Make-up" on website)
- *NO PANTIES under tights for rehearsal or recital
- *For rehearsals wear old tights. Save new ones for recitals
- *NO jewelry, nail polish or holes in tights

NOVEMBER 1 st – 50% ("Costume Deposit")	\$ <u>22</u>
DECEMBER 1 st – 50% ("Costume Balance")	\$ <u>22</u>
COSTUME TOTAL	\$ <u>44</u>



2013 RECITAL COSTUME INFO

Parents can view this info online in the "Recitals" section of the website starting in November

CLASS NAME: 4+5CD DAY: Monday TIME: 10-11am
INSTRUCTOR: Natalie LOCATION: DXP 1 or DXP 2
SONG: Catch the Wind, by Donovan DANCE STYLE: Ballet

TIGHTS:

ARE TIGHTS INCLUDING WITH THIS COSTUME?

Yes

No

COLOR OF TIGHTS: Tan/Caramel

~~Ballet Pink~~

Other: _____

Not Wearing Tights

SHOES:

*Shoes are NOT included with any costume. You are responsible for purchasing these on your own.
*All Intro to B/T/J classes performing a jazz dance wear black jazz shoes.

Pink Ballet Shoes

Black Patent Leather Tap Shoes
*CD & Intro classes

Black Lace-up Oxford Tap Shoes
*Jazz/Tap 1 & up

Tan Slip-on Jazz Shoes

Black Slip-on Jazz Shoes

Black Dance Sneakers

Other: _____

For CD & Intro Classes Only, LACE COLOR: _____

*laces will be distributed at recitals by backstage parents

HAIR: high ponytail, part on the left, filower on right side

PROPS and/or ACCESSORIES THAT WILL BE ORDERED w/COSTUME & STUDENT WILL OWN:

ADDITIONAL COSTUME ITEMS THAT DANCER MUST PROVIDE HER/HIMSELF:

REMINDERS:

- *Dancers 4+yr s should wear "stage make-up" (Refer to "Recital Make-up" on website)
- *NO PANTIES under tights for rehearsal or recital
- *For rehearsals wear old tights. Save new ones for recitals
- *NO jewelry, nail polish or holes in tights

NOVEMBER 1 st - 50% ("Costume Deposit")	\$ <u>23</u>
DECEMBER 1 st - 50% ("Costume Balance")	\$ <u>23</u>
COSTUME TOTAL	\$ <u>46</u>



2013 RECITAL COSTUME INFO

Parents can view this info online in the "Recitals" section of the website starting in November

CLASS NAME: 2+3 CD DAY: Monday TIME: 11-12am
INSTRUCTOR: Natalie LOCATION: DXP 1 or DXP 2
SONG: Oliver + Company "Good Company" DANCE STYLE: Ballet

TIGHTS:

ARE TIGHTS INCLUDING WITH THIS COSTUME?

Yes No

COLOR OF TIGHTS: Tan/Caramel

Ballet Pink Other: _____

Not Wearing Tights

SHOES:

*Shoes are NOT included with any costume. You are responsible for purchasing these on your own.

*All Intro to B/T/J classes performing a jazz dance wear black jazz shoes.

Pink Ballet Shoes

Black Patent Leather Tap Shoes

*CD & Intro classes

Black Lace-up Oxford Tap Shoes

*Jazz/Tap 1 & up

Tan Slip-on Jazz Shoes

Black Slip-on Jazz Shoes

Black Dance Sneakers

Other: _____

For CD & Intro Classes Only, LACE COLOR: _____

*laces will be distributed at recitals by backstage parents

HAIR: Some up some down, hair away from the face

PROPS and/or ACCESSORIES THAT WILL BE ORDERED w/COSTUME & STUDENT WILL OWN:

ADDITIONAL COSTUME ITEMS THAT DANCER MUST PROVIDE HER/HIMSELF:

REMINDERS:

*Dancers 4+yr s should wear "stage make-up"

(Refer to "Recital Make-up" on website)

*NO PANTIES under tights for rehearsal or recital

*For rehearsals wear old tights. Save new ones for recitals

*NO jewelry, nail polish or holes in tights

NOVEMBER 1 st - 50% ("Costume Deposit")	\$ <u>23.50</u>
DECEMBER 1 st - 50% ("Costume Balance")	\$ <u>23.50</u>
COSTUME TOTAL	\$ <u>47</u>

