

2013 RECITAL COSTUME INFO

Parents can view this info online in the "Recitals" section of the website starting in November

CLASS NAME: Lyrical 2 DAY: Tuesday TIME: 5:30
INSTRUCTOR: Mimi Schmotzer LOCATION: DXP 1 or DXP 2
SONG: Wanderlust by Bjork DANCE STYLE: contemporary

TIGHTS:

ARE TIGHTS INCLUDING WITH THIS COSTUME? Yes No

COLOR OF TIGHTS: Tan/Caramel Ballet Pink Other: _____ Not Wearing Tights

SHOES:

*Shoes are NOT included with any costume. You are responsible for purchasing these on your own.
*All Intro to B/T/J classes performing a jazz dance wear black jazz shoes.

Pink Ballet Shoes Black Patent Leather Tap Shoes Black Lace-up Oxford Tap Shoes
*CD & Intro classes *Jazz/Tap 1 & up

Tan Slip-on Jazz Shoes Black Slip-on Jazz Shoes Black Dance Sneakers Other: _____

For CD & Intro Classes Only, LACE COLOR: _____

*laces will be distributed at recitals by backstage parents

HAIR: High "sock" bun

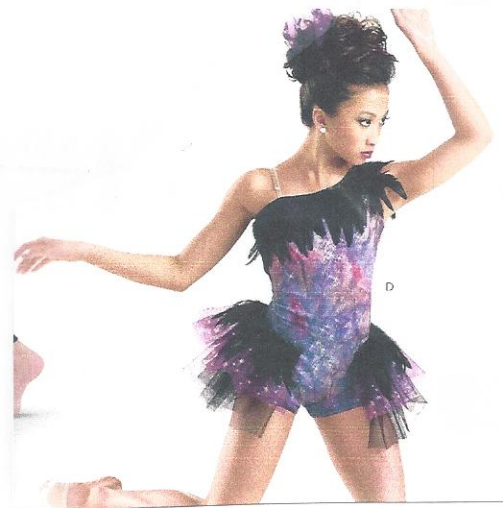
PROPS and/or ACCESSORIES THAT WILL BE ORDERED w/COSTUME & STUDENT WILL OWN:

ADDITIONAL COSTUME ITEMS THAT DANCER MUST PROVIDE HER/HIMSELF:

REMINDERS:

- *Dancers 4+yr s should wear "stage make-up"
(Refer to "Recital Make-up" on website)
- *NO PANTIES under tights for rehearsal or recital
- *For rehearsals wear old tights. Save new ones for recitals
- *NO jewelry, nail polish or holes in tights

NOVEMBER 1 st – 50% ("Costume Deposit")	\$ <u>24.50</u>
DECEMBER 1 st – 50% ("Costume Balance")	\$ <u>24.50</u>
COSTUME TOTAL	\$ <u>49</u>



2013 RECITAL COSTUME INFO

Parents can view this info online in the "Recitals" section of the website starting in November

CLASS NAME: Ballet 4/5 DAY: Tuesday TIME: 6:30pm

INSTRUCTOR: Marissa LOCATION: DXP 1 or DXP 2

SONG: Amelie - La Valse D'Amelie DANCE STYLE: Ballet
(orchestral version)

TIGHTS:

ARE TIGHTS INCLUDING WITH THIS COSTUME? Yes No

COLOR OF TIGHTS: Tan/Caramel Ballet Pink Other: _____ Not Wearing Tights

SHOES:

*Shoes are NOT included with any costume. You are responsible for purchasing these on your own.
 *All Intro to B/T/J classes performing a jazz dance wear black jazz shoes.

Pink Ballet Shoes

Black Patent Leather Tap Shoes
 *CD & Intro classes

Black Lace-up Oxford Tap Shoes
 *Jazz/Tap 1 & up

Tan Slip-on Jazz Shoes Black Slip-on Jazz Shoes Black Dance Sneakers Other: _____

For CD & Intro Classes Only, LACE COLOR: _____

*laces will be distributed at recitals by backstage parents

HAIR: Parted on dancer's left, pulled back in middle of head in a bun. Secure bun to head with bobby pins. Hairspray or gel all wispies and bangs down. Buncover worn over bun and bobby pinned to head.

PROPS and/or ACCESSORIES THAT WILL BE ORDERED w/COSTUME & STUDENT WILL OWN:

ADDITIONAL COSTUME ITEMS THAT DANCER MUST PROVIDE HER/HIMSELF:

REMINDERS:

- *Dancers 4+yr s should wear "stage make-up" (Refer to "Recital Make-up" on website)
- *NO PANTIES under tights for rehearsal or recital
- *For rehearsals wear old tights. Save new ones for recitals
- *NO jewelry, nail polish or holes in tights

NOVEMBER 1 st – 50% ("Costume Deposit")	\$ <u>32</u>
DECEMBER 1 st – 50% ("Costume Balance")	\$ <u>32</u>
COSTUME TOTAL	\$ <u>64</u>



2013 RECITAL COSTUME INFO

Parents can view this info online in the "Recitals" section of the website starting in November

CLASS NAME: BALLET 3 DAY: TUES TIME: 6:30
INSTRUCTOR: TUZER LOCATION: (DXP 1) or DXP 2
SONG: AMELIE : COMPINE D'UN AUTRE ETE DANCE STYLE: ballet

TIGHTS:

ARE TIGHTS INCLUDING WITH THIS COSTUME? Yes No
COLOR OF TIGHTS: Tan/Caramel Ballet Pink Other: _____ Not Wearing Tights

SHOES:

*Shoes are NOT included with any costume. You are responsible for purchasing these on your own.

*All Intro to B/T/J classes performing a jazz dance wear black jazz shoes.

Pink Ballet Shoes

Black Patent Leather Tap Shoes

*CD & Intro classes

Black Lace-up Oxford Tap Shoes

*Jazz/Tap 1 & up

Tan Slip-on Jazz Shoes

Black Slip-on Jazz Shoes

Black Dance Sneakers

Other: _____

For CD & Intro Classes Only, LACE COLOR: _____

*laces will be distributed at recitals by backstage parents

HAIR: NEAT BUN

PROPS and/or ACCESSORIES THAT WILL BE ORDERED w/ COSTUME & STUDENT WILL OWN:

(hair clip included)

ADDITIONAL COSTUME ITEMS THAT DANCER MUST PROVIDE HER/HIMSELF:

REMINDERS:

*Dancers 4+yr s should wear "stage make-up"

(Refer to "Recital Make-up" on website)

*NO PANTIES under tights for rehearsal or recital

*For rehearsals wear old tights. Save new ones for recitals

*NO jewelry, nail polish or holes in tights

NOVEMBER 1 st - 50% ("Costume Deposit")	\$ <u>28.50</u>
DECEMBER 1 st - 50% ("Costume Balance")	\$ <u>28.50</u>
COSTUME TOTAL	\$ <u>57</u>



2013 RECITAL COSTUME INFO

Parents can view this info online in the "Recitals" section of the website starting in November

CLASS NAME: Ballet Jazz 1 DAY Tuesday TIME: 6:30
 INSTRUCTOR: Ms. Morgan LOCATION: DXP 1 or DXP 2
 SONG: Determinate DANCE STYLE: Jazz

TIGHTS:

ARE TIGHTS INCLUDING WITH THIS COSTUME?

Yes No

COLOR OF TIGHTS: Tan/Caramel Ballet Pink Other: _____ Not Wearing Tights

SHOES:

*Shoes are NOT included with any costume. You are responsible for purchasing these on your own.

*All Intro to B/T/J classes performing a jazz dance wear black jazz shoes.

Pink Ballet Shoes

Black Patent Leather Tap Shoes

Black Lace-up Oxford Tap Shoes

*CD & Intro classes

*Jazz/Tap 1 & up

Tan Slip-on Jazz Shoes

Black Slip-on Jazz Shoes

Black Dance Sneakers

Other: _____

For CD & Intro Classes Only, LACE COLOR: _____

*laces will be distributed at recitals by backstage parents

HAIR: Parted over dancers left eye, pulled into low side bun, Right side. Rhinestone holder wrapped around bun.

PROPS and/or ACCESSORIES THAT WILL BE ORDERED w/COSTUME & STUDENT WILL OWN:

Rhinestone Ponytail holder

ADDITIONAL COSTUME ITEMS THAT DANCER MUST PROVIDE HER/HIMSELF:

REMINDERS:

- *Dancers 4+yr s should wear "stage make-up" (Refer to "Recital Make-up" on website)
- *NO PANTIES under tights for rehearsal or recital
- *For rehearsals wear old tights. Save new ones for recitals
- *NO jewelry, nail polish or holes in tights

NOVEMBER 1 st – 50% ("Costume Deposit")	\$ <u>23</u>
DECEMBER 1 st – 50% ("Costume Balance")	\$ <u>23</u>
COSTUME TOTAL	\$ <u>46</u>



2013 RECITAL COSTUME INFO

Parents can view this info online in the "Recitals" section of the website starting in November

CLASS NAME: BALLET 3 DAY: TUES TIME: 6:45-8:00

INSTRUCTOR: LEIGH KOSLOSKI LOCATION: DXP 1 or DXP 2

SONG: DANCING IN THE MOONLIGHT BY KING HARVEST DANCE STYLE: BALLET

TIGHTS:

ARE TIGHTS INCLUDING WITH THIS COSTUME? Yes No

COLOR OF TIGHTS: Tan/Caramel Ballet Pink Other: _____ Not Wearing Tights

SHOES:

*Shoes are NOT included with any costume. You are responsible for purchasing these on your own.
 *All Intro to B/T/J classes performing a jazz dance wear black jazz shoes.

- | | | |
|--------------------------|---|--|
| <u>Pink Ballet Shoes</u> | Black Patent Leather Tap Shoes
*CD & Intro classes | Black Lace-up Oxford Tap Shoes
*Jazz/Tap 1 & up |
| Tan Slip-on Jazz Shoes | Black Slip-on Jazz Shoes | Black Dance Sneakers |
| Other: _____ | | |

For CD & Intro Classes Only, LACE COLOR: _____
 *laces will be distributed at recitals by backstage parents

HAIR: High Ballet Bun Hair Piece on left

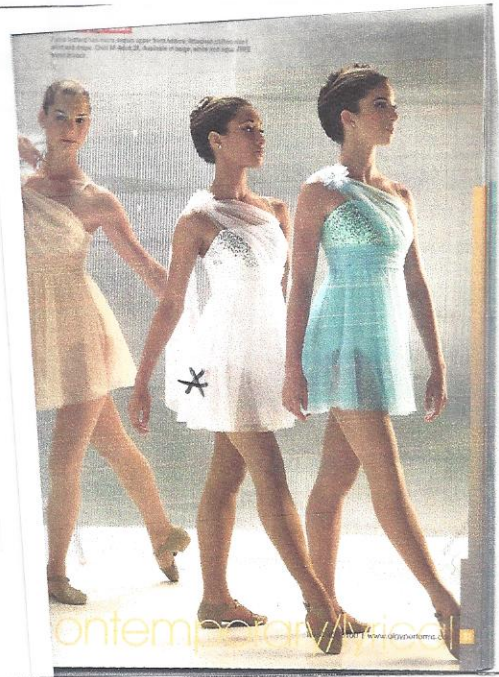
PROPS and/or ACCESSORIES THAT WILL BE ORDERED w/COSTUME & STUDENT WILL OWN: _____

ADDITIONAL COSTUME ITEMS THAT DANCER MUST PROVIDE HER/HIM

REMINDERS:

- *Dancers 4+yr s should wear "stage make-up"
(Refer to "Recital Make-up" on website)
- *NO PANTIES under tights for rehearsal or recital
- *For rehearsals wear old tights. Save new ones for recitals
- *NO jewelry, nail polish or holes in tights

NOVEMBER 1 st – 50% ("Costume Deposit")	\$ <u>31.50</u>
DECEMBER 1 st – 50% ("Costume Balance")	\$ <u>31.50</u>
COSTUME TOTAL	\$ <u>63</u>



2013 RECITAL COSTUME INFO

Parents can view this info online in the "Recitals" section of the website starting in November

CLASS NAME: Tap 3 DAY: Tuesday TIME: 7:45
INSTRUCTOR: Brit LOCATION: DXP 1 or DXP 2
SONG: Halo / Sunshine DANCE STYLE: Tap

TIGHTS:

ARE TIGHTS INCLUDING WITH THIS COSTUME?

Yes

No

COLOR OF TIGHTS: Tan/Caramel Ballet Pink Other: _____ Not Wearing Tights

SHOES:

*Shoes are NOT included with any costume. You are responsible for purchasing these on your own.

*All Intro to B/T/J classes performing a jazz dance wear black jazz shoes.

Pink Ballet Shoes

Black Patent Leather Tap Shoes

*CD & Intro classes

Black Lace-up Oxford Tap Shoes

*Jazz/Tap 1 & up

Tan Slip-on Jazz Shoes

Black Slip-on Jazz Shoes

Black Dance Sneakers

Other: _____

For CD & Intro Classes Only, LACE COLOR: _____

*laces will be distributed at recitals by backstage parents

HAIR: Right Part, Low Ponytail

PROPS and/or ACCESSORIES THAT WILL BE ORDERED w/COSTUME & STUDENT WILL OWN:

ADDITIONAL COSTUME ITEMS THAT DANCER MUST PROVIDE HER/HIMSELF:

REMINDERS:

- *Dancers 4+yr s should wear "stage make-up" (Refer to "Recital Make-up" on website)
- *NO PANTIES under tights for rehearsal or recital
- *For rehearsals wear old tights. Save new ones for recitals
- *NO jewelry, nail polish or holes in tights

* will be gold

NOVEMBER 1 st - 50% ("Costume Deposit")	\$ <u>28</u>
DECEMBER 1 st - 50% ("Costume Balance")	\$ <u>28</u>
COSTUME TOTAL	\$ <u>56</u>



2013 RECITAL COSTUME INFO

Parents can view this info online in the "Recitals" section of the website starting in November

CLASSNAME Ballet/Jazz 1 DAY: Tuesday TIME: 7:45 pm

INSTRUCTOR: Sloan Choulet LOCATION: DXP 1 or DXP 2

SONG: Looking Good, Feeling Gorgeous DANCE STYLE: Jazz

TIGHTS:

ARE TIGHTS INCLUDING WITH THIS COSTUME? Yes No

COLOR OF TIGHTS: Tan/Caramel Ballet Pink Other: _____ Not Wearing Tights

SHOES:

* Shoes are NOT included with any costume. You are responsible for purchasing these on your own.
* All Intro to B/T/J classes performing a jazz dance wear black jazz shoes.

- Pink Ballet Shoes
- Black Patent Leather Tap Shoes
* CD & Intro classes
- Black Lace-up Oxford Tap Shoes
* Jazz/ Tap 1 & up
- Tan Slip-on Jazz Shoes
- Black Slip-on Jazz Shoes
- Black Dance Sneakers
- Other: _____

For CD & Intro Classes Only, LACE COLOR: _____

* laces will be distributed at recitals by backstage parents

HAIR: Dancer's left part above brow, low pony tail.

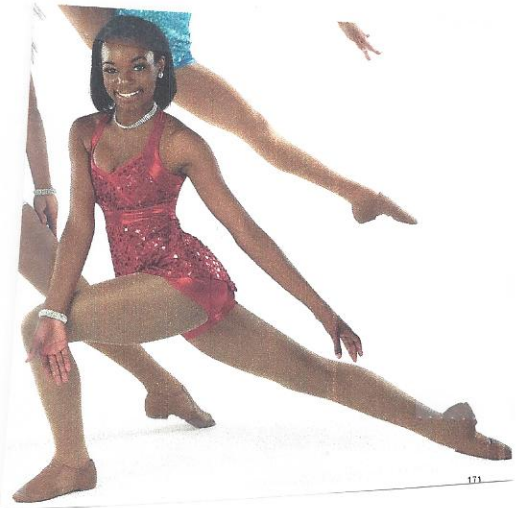
PROPS and/ or ACCESSORIES THAT WILL BE ORDERED w/ COSTUME & STUDENT WILL OWN:

ADDITIONAL COSTUME ITEMS THAT DANCER MUST PROVIDE HER/ HIMSELF:

REMINDERS:

- * Dancers 4+yr s should wear "stage make-up"
(Refer to "Recital Make-up" on website)
- * NO PANTIES under tights for rehearsal or recital
- * For rehearsals wear old tights. Save new ones for recitals
- * NO jewelry, nail polish or holes in tights

NOVEMBER 1 st - 50% ("Costume Deposit")	\$ <u>30</u>
DECEMBER 1 st - 50% ("Costume Balance")	\$ <u>30</u>
COSTUME TOTAL	\$ <u>60</u>



2013 RECITAL COSTUME INFO

Parents can view this info online in the "Recitals" section of the website starting in November

CLASS NAME: Lyrical 4-5 DAY: Tuesday TIME: 9:00-9:45

INSTRUCTOR: Mimi Schmotz LOCATION: DXP 1 or (DXP 2)

SONG: Werewolf by Coco Rosie DANCE STYLE: contemporary

TIGHTS:

ARE TIGHTS INCLUDING WITH THIS COSTUME? Yes (No)

COLOR OF TIGHTS: Tan/Caramel Ballet Pink Other: _____ Not Wearing Tights

SHOES:

*Shoes are NOT included with any costume. You are responsible for purchasing these on your own.

*All Intro to B/T/J classes performing a jazz dance wear black jazz shoes.

Pink Ballet Shoes

Black Patent Leather Tap Shoes

Black Lace-up Oxford Tap Shoes

*CD & Intro classes

*Jazz/Tap 1 & up

Tan Slip-on Jazz Shoes

Black Slip-on Jazz Shoes

Black Dance Sneakers

Other: Foot undies

For CD & Intro Classes Only, LACE COLOR: _____

*laces will be distributed at recitals by backstage parents

HAIR: 3 ponytails - High, medium, Low

PROPS and/or ACCESSORIES THAT WILL BE ORDERED w/COSTUME & STUDENT WILL OWN:

ADDITIONAL COSTUME ITEMS THAT DANCER MUST PROVIDE HER/HIMSELF:

REMINDERS:

- *Dancers 4+yr s should wear "stage make-up"
(Refer to "Recital Make-up" on website)
- *NO PANTIES under tights for rehearsal or recital
- *For rehearsals wear old tights. Save new ones for recitals
- *NO jewelry, nail polish or holes in tights

NOVEMBER 1 st - 50% ("Costume Deposit")	\$ <u>20</u>
DECEMBER 1 st - 50% ("Costume Balance")	\$ <u>20</u>
COSTUME TOTAL	\$ <u>40</u>

