

## 2012 RECITAL COSTUME INFO

Parents can view this info online in the "Recitals" section of the website starting in November

CLASS NAME: Creative Dance 3-4 DAY: Tuesday TIME: 9:00  
 INSTRUCTOR: Heather Duncan LOCATION: DXP 1 or DXP 2  
 SONG: Brahm's Lullaby DANCE STYLE: Ballet

**TIGHTS:**

ARE TIGHTS INCLUDING WITH THIS COSTUME? Yes No  
 COLOR OF TIGHTS: Tan/Caramel Ballet Pink Other: \_\_\_\_\_ Not Wearing Tights

**SHOES:**

\*Shoes are NOT included with any costume. You are responsible for purchasing these on your own.

Pink Ballet Shoes

Black Patent Leather Tap Shoes  
 \*CD & Intro classes

Black Lace-up Oxford Tap Shoes  
 \*Jazz/Tap 1 & up

Tan Slip-on Jazz Shoes      Black Slip-on Jazz Shoes      Black Dance Sneakers      Other: \_\_\_\_\_

For CD & Intro Classes Only, LACE COLOR: N/A

\*laces will be distributed at recitals

**HAIR:** 1/2 up 1/2 down and curly with flower bow attached at hair tie

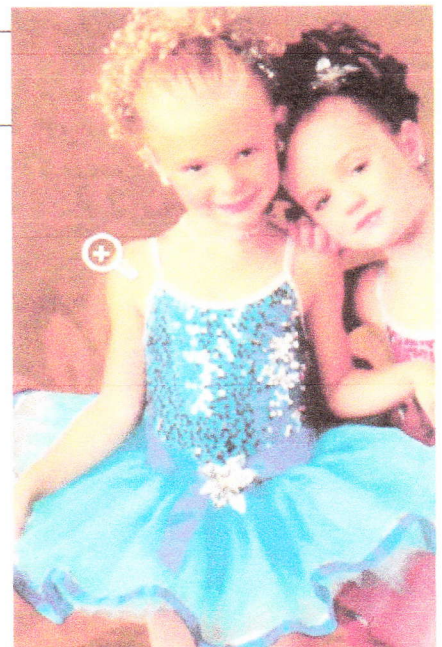
**PROPS and/or ACCESSORIES THAT WILL BE ORDERED w/COSTUME & STUDENT WILL OWN:**

**ADDITIONAL COSTUME ITEMS THAT DANCER MUST PROVIDE HER/HIMSELF:**

**REMINDERS:**

- \*Dancers 4+yr s should wear "stage make-up" (Refer to "Recital Make-up" on website)
- \*NO PANTIES under tights for rehearsal or recital
- \*For rehearsals wear old tights. Save new ones for recitals
- \*NO jewelry, nail polish or holes in tights

NOVEMBER 1 <sup>st</sup> – 50% ("Costume Deposit")	\$ <u>23</u>
DECEMBER 1 <sup>st</sup> – 50% ("Costume Balance")	\$ <u>23</u>
<b>COSTUME TOTAL</b>	<b>\$ <u>46</u></b>



\* Blue satin sash tied around waist with flower clip attached to knot in front.  
 \* other flower clip attached to head on dancer's right



## 2012 RECITAL COSTUME INFO

Parents can view this info online in the "Recitals" section of the website starting in November

CLASS NAME: CD 4-5 DAY: Tuesday TIME: 11:00  
INSTRUCTOR: Melissa LOCATION: DXP 1 or DXP 2  
SONG: "One sera sera" DANCE STYLE: Ballet

### TIGHTS:

ARE TIGHTS INCLUDING WITH THIS COSTUME?

Yes No

COLOR OF TIGHTS: Tan/Caramel

Ballet Pink

Other: \_\_\_\_\_

Not Wearing Tights

### SHOES:

\*Shoes are NOT included with any costume. You are responsible for purchasing these on your own.

Pink Ballet Shoes

Black Patent Leather Tap Shoes

Black Lace-up Oxford Tap Shoes

\*CD & Intro classes

\*Jazz/Tap 1 & up

Tan Slip-on Jazz Shoes

Black Slip-on Jazz Shoes

Black Dance Sneakers

Other: \_\_\_\_\_

For CD & Intro Classes Only, LACE COLOR: \_\_\_\_\_

\*laces will be distributed at recitals

HAIR: Half up half down ~~ornaments~~ curly barrette on dancers left

PROPS and/or ACCESSORIES THAT WILL BE ORDERED w/COSTUME & STUDENT WILL OWN:

fringe skirt, tutu, sequin barrette

ADDITIONAL COSTUME ITEMS THAT DANCER MUST PROVIDE HER/HIMSELF:

### REMINDERS:

\*Dancers 4+yr s should wear "stage make-up"

(Refer to "Recital Make-up" on website)

\*NO PANTIES under tights for rehearsal or recital

\*For rehearsals wear old tights. Save new ones for recitals

\*NO jewelry, nail polish or holes in tights



NOVEMBER 1 <sup>st</sup> – 50% ("Costume Deposit")	\$ <u>12</u>
DECEMBER 1 <sup>st</sup> – 50% ("Costume Balance")	\$ <u>12</u>
<b>COSTUME TOTAL</b>	<b>\$ <u>24</u></b>

## 2012 RECITAL COSTUME INFO

Parents can view this info online in the "Recitals" section of the website starting in November

CLASS NAME: CD 4-5 DAY: Tuesday TIME: 11:00  
INSTRUCTOR: Melissa LOCATION: DXP 1 or DXP 2  
SONG: "Tweedle Dee" DANCE STYLE: Tap

### TIGHTS:

ARE TIGHTS INCLUDING WITH THIS COSTUME? Yes No  
COLOR OF TIGHTS: Tan/Caramel Ballet Pink Other: \_\_\_\_\_ Not Wearing Tights

### SHOES:

\*Shoes are NOT included with any costume. You are responsible for purchasing these on your own.

Pink Ballet Shoes Black Patent Leather Tap Shoes Black Lace-up Oxford Tap Shoes  
\*CD & Intro classes \*Jazz/Tap 1 & up  
Tan Slip-on Jazz Shoes Black Slip-on Jazz Shoes Black Dance Sneakers Other: \_\_\_\_\_

For CD & Intro Classes Only, LACE COLOR: purple  
\*laces will be distributed at recitals

HAIR: Half up half down curly Barrette on dancers left.

PROPS and/or ACCESSORIES THAT WILL BE ORDERED w/COSTUME & STUDENT WILL OWN:

fringe skirt, tutu, sequin barrette

ADDITIONAL COSTUME ITEMS THAT DANCER MUST PROVIDE HER/HIMSELF:

### REMINDERS:

- \*Dancers 4+yr s should wear "stage make-up"  
(Refer to "Recital Make-up" on website)
- \*NO PANTIES under tights for rehearsal or recital
- \*For rehearsals wear old tights. Save new ones for recitals
- \*NO jewelry, nail polish or holes in tights

NOVEMBER 1 <sup>st</sup> – 50% ("Costume Deposit")	\$ <u>13.50</u>
DECEMBER 1 <sup>st</sup> – 50% ("Costume Balance")	\$ <u>13.50</u>
<b>COSTUME TOTAL</b>	\$ <u>27</u>



### 2012 RECITAL COSTUME INFO

Parents can view this info online in the "Recitals" section of the website starting in November

CLASS NAME: Superhero DAY: Tuesday TIME: 11:15  
INSTRUCTOR: Heather LOCATION: DXP 1 or (DXP 2)  
SONG: Batman Theme DANCE STYLE: Tumble

#### TIGHTS:

ARE TIGHTS INCLUDING WITH THIS COSTUME? Yes  No   
COLOR OF TIGHTS: Tan/ Caramel  Ballet Pink  Other: \_\_\_\_\_ Not Wearing Tights

#### SHOES:

\* Shoes are NOT included with any costume. You are responsible for purchasing these on your own.

Pink Ballet Shoes  Black Patent Leather Tap Shoes  Black Lace-up Oxford Tap Shoes   
\* CD & Intro classes \* Jazz/ Tap 1 & up Bare Feet  
Tan Slip-on Jazz Shoes  Black Slip-on Jazz Shoes  Black Dance Sneakers  Other: ~~Flip Flops~~

For CD & Intro Classes Only, LACE COLOR: N/A  
\* laces will be distributed at recitals

HAIR: \_\_\_\_\_

PROPS and/ or ACCESSORIES THAT WILL BE ORDERED w/ COSTUME & STUDENT WILL OWN:  
N/A

ADDITIONAL COSTUME ITEMS THAT DANCER MUST PROVIDE HER/ HIMSELF:  
Black Socks

#### REMINDERS:

- \* Dancers 4+yr s should wear "stage make-up" (Refer to "Recital Make-up" on website)
- \* NO PANTIES under tights for rehearsal or recital
- \* For rehearsals wear old tights. Save new ones for recitals
- \* NO jewelry, nail polish or holes in tights

NOVEMBER 1 <sup>st</sup> - 50% ("Costume Deposit")	\$ <u>16.75</u>
DECEMBER 1 <sup>st</sup> - 50% ("Costume Balance")	\$ <u>16.75</u>
<b>COSTUME TOTAL</b>	<b>\$ <u>33.50</u></b>

\* Costume may vary slightly from picture



IF headpiece is not attached, SAFETY PIN it @ where the velcro attaches it to the cape.